



ARCHEUS / POST-MODERN

www.archeus.com



Grayson Perry, Piggy Bank, 2024

In 2017 Serpentine presented a major exhibition 'The Most Popular Art Exhibition Ever!' of new work by Grayson Perry, one of the most astute commentators on contemporary society and culture. As part of the exhibition, the artist's hand-made ceramic work Long Pig, 2017, featured at the entrance to the show. This 'Little Pig' piggy bank emulates its larger counterpart whereby the owner can 'vote', much like the 'Long Pig', by inserting coins into the appropriate slots that they identify with.



**ARTIST**

Grayson Perry

TITLE

Piggy Bank

MEDIUM

Ceramic multiple in blue and white
with rubber stopper

DATE

2024

SIZE

8 ¼ x 4 ¼ x 4 in : 21.0 x 11.0 x 10.0 cm

EDITION

Multiple

PUBLISHER

Serpentine Gallery, London

REFERENCE

A22-I2

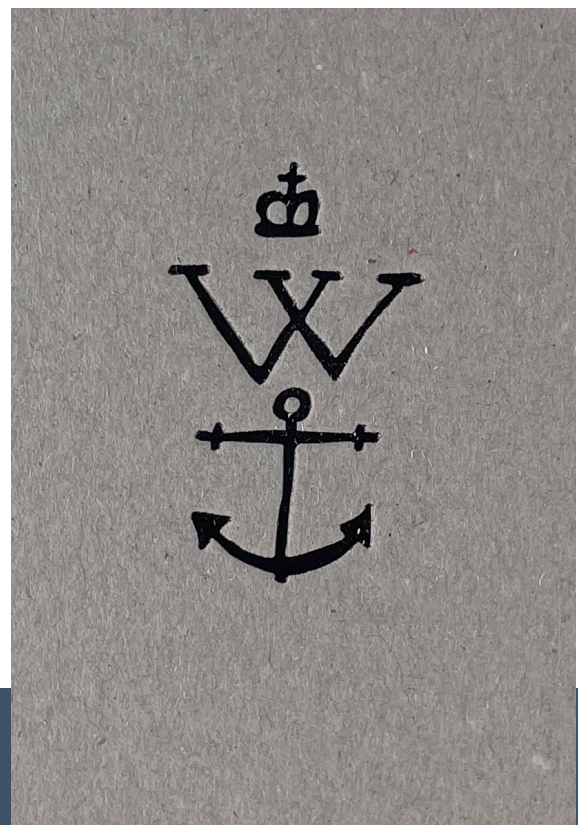
Grayson Perry

Grayson Perry is an English artist, particularly noted for his ceramic work and tapestries. The winner of the 2003 Turner Prize, Perry is also a writer and broadcaster of incisive wit and personality, often appearing as transvestite alter-ego Claire.

The pots for which he is, arguably, best known are richly decorated with text, drawings, photographic transfer and glazes. Each has a narrative, often dark and meandering, but commanding a range of emotions from the viewer. Contemporary human life is wittily dissected, often from a nostalgic or sentimental standpoint, and the subjects of sexuality, politics, religion and social status and injustice are regularly investigated. Similarly, his works in the medium of

tapestry are often created on an epic scale, evoking the grandeur of medieval battle scenes but dealing with the issues of now. Unafraid of controversy, Perry's narratives can be challenging with no subject finding itself out-of-bounds, auto-biographically or otherwise.

Work by the artist is held in museum collections worldwide, including The British Museum, London; Tate Collection, London; Bonnefanten Museum, Maastricht; Museum of Modern Art, New York; National Gallery of Victoria, Melbourne; Stedelijk Museum; Amsterdam; Victoria & Albert Museum, London and Yale Center for British Art, New Haven among many others





ARCHEUS / POST-MODERN
www.archeus.com

All enquiries:
Brian Balfour-Oatts
brian@archeus.com
US: 1-212-652-1665
UK: +44 (0)7979 695079