

ARCHEUS / POST-MODERN
www.archeus.com



George Condo, *Untitled*, 2018

**ARTIST**

George Condo (b. 1957)

TITLE

Untitled

MEDIUM

Graphite on paper

DATE

2018

SIZE

16 x 22 ½ in : 40.5 x 57.0 cm

INSCRIPTIONS

Signed and dated upper left; Extensively inscribed and dated April 25, 2018 verso

PROVENANCE

Acquired directly from the artist as a gift
Private Collection, New York

REFERENCE

AC25-42

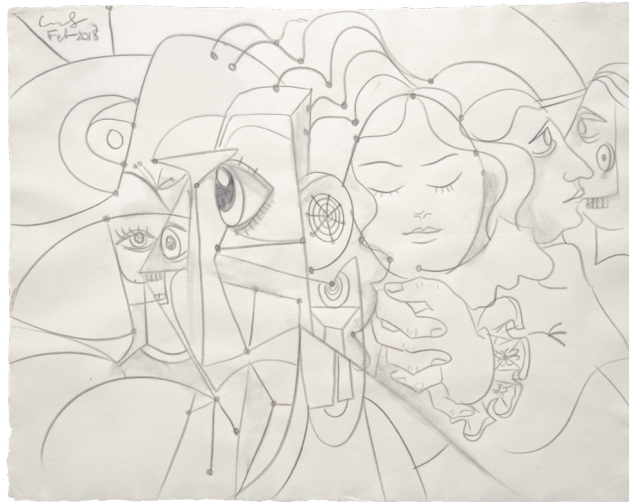
George Condo

George Condo is an American artist (b.1957), known for coining the term 'Artificial Realism' to describe his approach to painting; 'the realistic representation of that which is artificial'. Condo's extremely distinctive work draws upon traditional elements in art history, particularly the portrait, realising classically executed paintings which are always surprising and often comically grotesque, thus commenting on contemporary society.

Recognised as being one of America's most influential living artists, Condo first started exhibiting paintings which had the sensibilities of European Old Masters, subverted with references to popular American culture, including Playboy magazine, comics and cartoons. Condo has been credited with being instrumental in the international revival of painting from the 1980s onwards. His influence can be noted in the work of Sean Landers, John Currin, Lisa Yuskavage and Glenn Brown.

Condo's works feature in important public and private collections, including The Museum of Modern Art, New York; The Metropolitan Museum of Art, New York; The Whitney Museum of American Art, New York; Museu d'Art Contemporani de Barcelona, Barcelona; Astrup Fearnley Museet, Oslo; and the Fonds National d'Art Contemporain, Paris.





ARCHEUS / POST-MODERN
www.archeus.com

All enquiries:
Brian Balfour-Oatts
brian@archeus.com
US: 1-212-652-1665
UK: +44 (0)7979 695079